



**ALASKA DIVISION OF HOMELAND SECURITY &
EMERGENCY MANAGEMENT**



SITUATION REPORT 20-352 • DEC 17, 2020

Toll-Free 1.800.478.2337

Anchorage Area 907.428.7000

SEOC 907.428.7100

<p><u>SEOC Preparedness Level</u></p> <p>Level 3 - Ongoing Active Response - 2020 December Southeast Storm</p>	<p>http://ready.alaska.gov</p>	<p><u>National Terrorism Advisory System:</u></p> <p>View this site for the latest NTAS bulletin: read the current NTAS Bulletin here.</p>
<p><u>Maritime Security (MARSEC)</u></p> <p>Level:1-Minimum Appropriate Security Measures</p>	<p>WHO Novel Coronavirus Pandemic (COVID-19):</p> <p>2019 Novel Coronavirus</p>	<p><u>Alaska Military Installation Force Protection Level:</u> FPCON Bravo</p>

(Significant changes from previous situation reports are in red.)

THREAT LEVEL CHANGES:

None

Significant Issues:

2020 December Southeast Storm Disaster:

SEOC remains at Level 3 and is actively engaged in response and initiation of recovery operations to Southeast Alaska communities impacted by the recent storm under Governor Dunleavy's Declaration of Disaster.

Haines:

Haines Borough Emergency Operations Center (EOC) and deployed State Division Supervisor are working to transition from response to recovery operations.

An area of Beach Road continues to be evacuated with no access, due to serious risk for additional landslides. Plans are being considered to provide emergency access to the closed area by boat to retrieve personal belongings and secure homes.

Alaska Division of Geological and Geophysical Surveys and Alaska Department of Transportation and Public Facilities are working to support a more detailed, definitive assessment of landslide risk for the community.

Sheltering and mass care support for survivors continue, with work underway to transition to long-term recovery with active survivor case management. 12 survivors were sheltered in non-congregate shelters, while additional survivors are housed with family, neighbors, friends.

A CARES Act grant is being applied for community mental health support.

Other Southeast Alaska Communities:

SEOC Recovery Branch held an initial meeting with Southeast communities to provide information on the disaster cost tracking, documentation, and reimbursement process.

Coronavirus (COVID-19) Pandemic:

A unified command has been established at the SEOC. The SEOC continues to support statewide response to COVID-19.

State of Alaska Department of Health and Social Services (DHSS)

DHSS is operating as the Medical Branch under the State EOC/Unified Command.

For more information about the outbreak refer to:

<https://covid19.alaska.gov/>

<https://www.cdc.gov/coronavirus/2019-ncov/index.html>

The Alaska DHSS website is located at <http://dhss.alaska.gov/Pages/default.aspx>

NTAS BULLETIN

To read current advisories, select the link below.

<https://www.dhs.gov/national-terrorism-advisory-system>

Travel Alerts and Conditions

COVID-19 Health Orders may affect travel. Check <https://covid19.alaska.gov/> for current Health Orders.

For current driving conditions dial 511 or link to <http://511.alaska.gov/>

Recent Earthquakes

USGS Earthquake Information: <http://earthquake.usgs.gov/>

National Tsunami Warning Center: <http://ntwc.arh.noaa.gov/>

Alaska Volcanoes

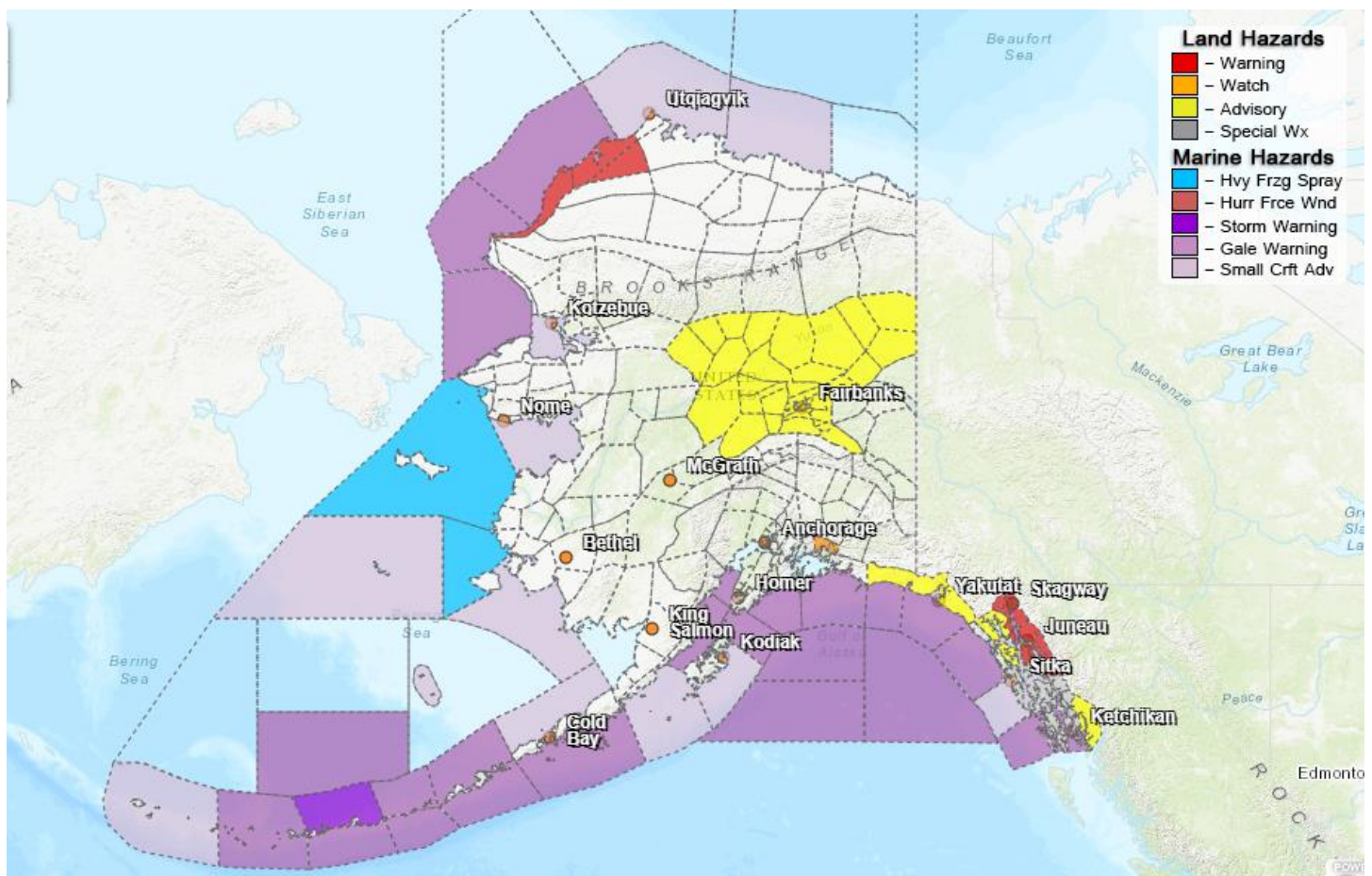
For Alaska Volcano updates, go to: <https://www.avo.alaska.edu/>

Air Quality Index (AQI) Advisories

For the most up to date Air Quality Index Advisories:

<http://dec.alaska.gov/Applications/Air/airtoolsweb/Home/Index>

Significant Weather:



A Blizzard Warning is in effect for the Western Arctic Coast until noon today. Winds gusting as high as 45 mph will cause whiteout conditions in blowing snow. Significant drifting of the snow is likely. In addition, cold wind chills as low as 45 below zero are expected.

A Winter Storm Warning is in effect for the following areas:

- Haines Borough, Lynn Canal, Taiya Inlet, and the Klondike Highway until 5:00 A.M. Saturday. Heavy snow is expected with total snow accumulations of 8 to 14 inches and winds gusting as high as 35 mph.
- Juneau Borough & Northern Admiralty Island until 4:00 P.M. tomorrow. Heavy snow is expected with total snow accumulations of 8 to 13 inches and winds gusting as high as 35 mph.

A Winter Storm Watch is in effect for the Northeast Prince William Sound & Thompson Pass until 3:00 P.M. tomorrow. Blizzard conditions are possible, with total snow accumulations of 5 to 10 inches and winds could gust as high as 50 mph.

Winter Weather Advisories are in effect for the following areas:

- Cape Fairweather to Cape Suckling Coastal Area, including Glacier Bay and Eastern Chichagof Island until 4:00 P.M. tomorrow. Total snow accumulations 4 to 8 inches with winds gusting as high as 35 mph.
- Misty Fjords until noon tomorrow. Total snow accumulations of 7 to 9 inches are expected.

- Upper Koyukuk Valley until 9:00 P.M. today. Strong winds and blowing snow are expected. Winds gusting as high as 45 mph will cause areas of blowing and drifting snow, reducing visibility.

A Wind Chill Advisory is in effect for much of the Central Interior until 3:00 P.M. Friday. Cold air and sustained wind speeds of 15 mph or more will create low wind chills. Expect wind chills to range from 40 to 59 below zero.

A Special Weather Statement has been issued for the following areas:

- Dixon Entrance to Cape Decision Coastal Area, including the Southern Inner Channels. Heavy rain and strong winds could impact the area late Thursday into the early weekend. Rainfall totals of 2 to 4 inches are expected with gusty winds out of the southeast.
- Eastern Baranof & Southern Admiralty Islands & the Inner Channels from Kupreanof to Etolin Island. Heavy rain is expected Thursday into Saturday. Minor snow accumulations are possible near sea level into Thursday night for portions of the central inner channels. Rainfall amounts could range from 2 to 3 inches Thursday afternoon into Saturday.

For more information and the most current weather, Watches / Warnings / Advisories go to: <http://www.weather.gov/arh>

Avalanche Forecast:



- Areas near Cordova, Haines, Valdez, and along the Richardson Highway with Moderate risk.

Check the Avalanche Forecast Center closest to your area for the most up to date information on Avalanche potential. <https://alaskasnow.org/> or <https://www.weather.gov/afc/avalanche>

Spills of Oil and Hazardous Substances

The ADEC Spill Prevention and Response page is located at:

<http://dec.alaska.gov/spar/ppr/spill-information/response/>

Alaska Cyber Security Information

State Employees may sign up for cybersecurity notifications and alerts at

<https://oit.alaska.gov/Security>

The Next Situation Report: will be 18 December 2020. A significant change in the situation or the threat level will prompt an interim report.

This report is posted on the internet at <https://ready.alaska.gov/sitrep>. To register for email distribution, go to <http://list.state.ak.us/mailman/listinfo/dhsem.situation.report>. Direct questions regarding this report to the SEOC at 907-428-7100 or seoc@alaska.gov.